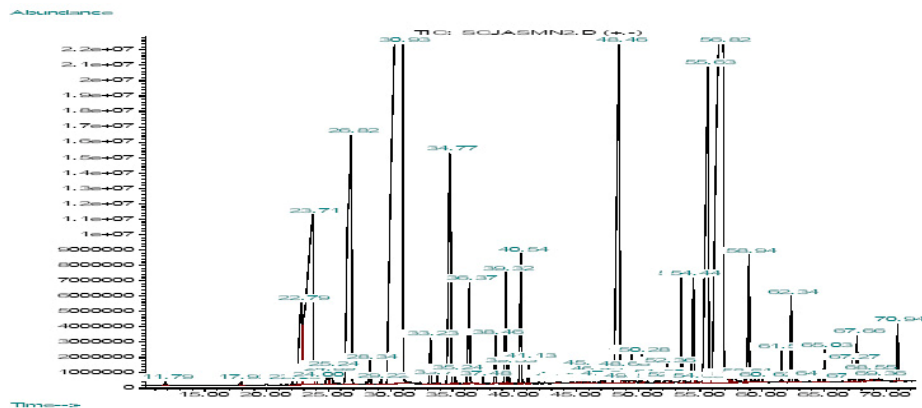


TECHNICAL INFORMATIONS (SPEC/COA/GC)

Product Name	: Jasmine Absolute (Egypt)	RESULT
Botanical Name	: Jasminum officinale	
Extraction Method	: Solvent Extraction	
Description	: Golden-brown clear liquid.	COMPLIES
Relative Density (20° C)	: 0.955 - 1.125	1.0283
Refractive Index (20° C)	: 1.510 - 1.525	1.5109
Optical Rotation	: -3° TO +5°	+1.0°
Shelf Life	: 24 Months	

MAIN CONSTITUENTS - GC Analysis

1. Benzyl acetate	32.31%	6. cis-Geraniol	3.95%
2. Benzyl benzoate	20.10%	7. Indole	1.31%
3. Benzyl alcohol	9.27%	8. Eugenol	1.14%
4. δ-Nerolidol	7.28%	9. Isojasmone	1.39%
5. Linalool	6.92%	10. α-Farnesene	0.11%



This information is obtained from current and reliable sources.
We provide the information herein without any warranty expressed or implied.
Customers are advised to determine in advance the safe conditions for use of this product.

As it is electronically generated document, hence no signature required.