

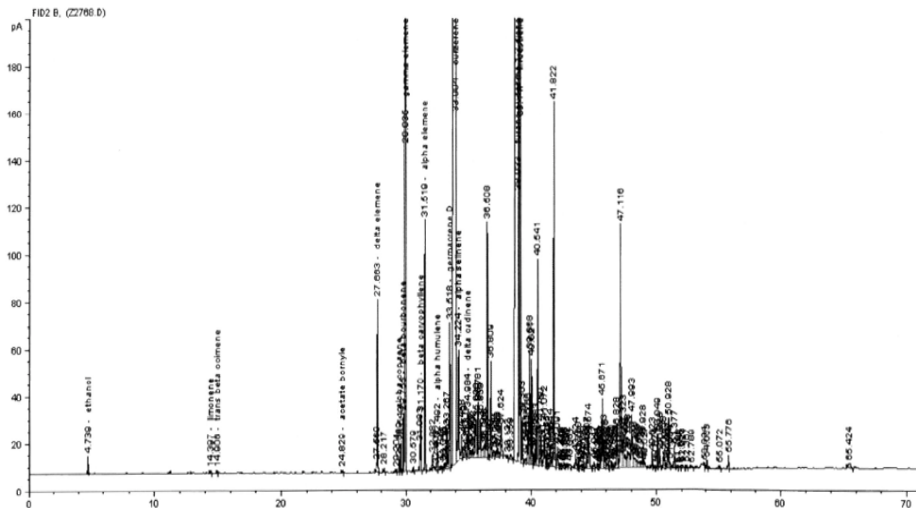
TECHNICAL INFORMATIONS (SPEC/COA/GC)

Product Name	: Myrrh	RESULT
Botanical Name	: Commiphora myrrha	
Description	: Light brown liquid with balsamic odour	<u>COMPLIES</u>
Specific Gravity (20° C)	: 0.9850 - 1.0140	<u>1.0043</u>
Refractive Index (20° C)	: 1.5190 - 1.5280	<u>1.5237</u>
Shelf Life	: 24 Months	

MAIN CONSTITUENTS - GC Analysis

1. Curzerene	34.38%	6. α -Selinene	0.91%
2. Furano eudsmo 1,3 diene	27.41%	7. δ -Elemene	0.86%
3. Lindrestrene	8.50%	8. Germacrene D	0.83%
4. β -Elemene	5.56%	9. β -Bourbonene	0.30%
5. γ -Elemene	1.30%	10. β -Caryophyllene	0.29%

Instrument : GC 6890 MS 5973
Column : DB1 60m * 0.25mm * 0.25 μ m
Carrier gas : Helium
Oven : 70°C – 3°C/min – 250°C for 20 min.



TR	Compound	%GC FID
4.739	ethanol	0,09
	alpha pinene	Tr
	camphene	Tr
	sabinene	Tr
	beta pinene	Tr
	paracymene	Tr
14.397	limonene	0,01
14.906	ocimene trans beta	0,01
24.829	acetate bornyle	0,01
27.663	delta elemene	0,86
29.399	alpha copaene	0,07
29.755	beta bourbonene	0,30
29.935	beta elemene	5,56
31.170	beta caryophyllene	0,29
31.519	gamma elemene	1,30
32.492	alpha humulene	0,16
33.518	germacrene D	0,83
33.994	curzerene	34,38
34.224	alpha selinene	0,91
34.984	delta cadinene	0,26
38.933	furano eudesma 1,3 diene	27,41
39.147	lindestrene	8,50
	total	80,86

This information is obtained from current and reliable sources.
We provide the information herein without any warranty expressed or implied.
Customers are advised to determine in advance the safe conditions for use of this product.

As it is electronically generated document, hence no signature required.