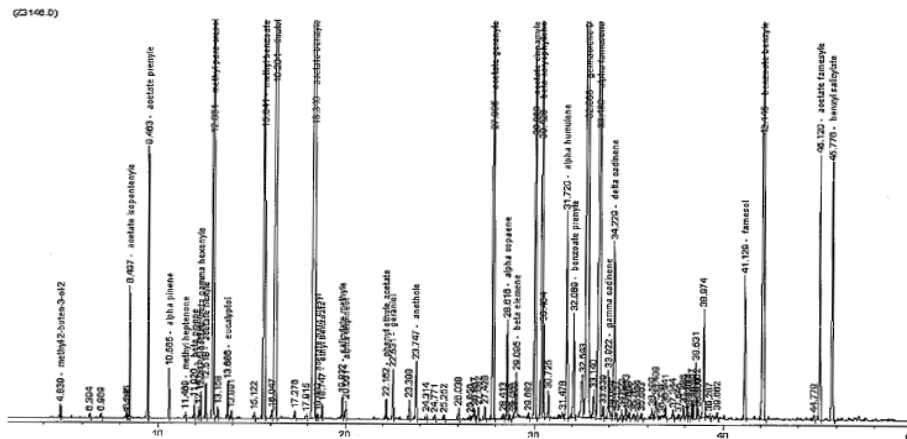


TECHNICAL INFORMATIONS (SPEC/COA/GC)

Product Name	: Ylang Ylang Extra	RESULT
Botanical Name	: Cananga odorata	
Description	: Pale to dark yellow with floral odour.	COMPLIES
Specific Gravity (20° C)	: 0.9200 - 0.9400	0.9318
Refractive Index (20° C)	: 1.5000 - 1.5100	1.5026
Optical Rotation	: -40° TO -60°	-52.3°
Shelf Life	: 24 Months	

MAIN CONSTITUENTS - GC Analysis

1. Germacrene D	17.27%	7. Geranyl acetate	4.80%
2. Benzyl acetate	11.29%	8. Benzyl benzoate	4.78%
3. α -Farnesene	9.62%	9. Methyl benzoate	4.69%
4. Linalol	8.60%	10. Cinnamyl acetate	3.85%
5. Methyl paracresol	8.05%	11. Farnesyl acetate	2.12%
6. β -caryophyllene	4.88%	12. Farnesol	1.17%



This information is obtained from current and reliable sources.
We provide the information herein without any warranty expressed or implied.
Customers are advised to determine in advance the safe conditions for use of this product.

As it is electronically generated document, hence no signature required.